

Setting up Custom Score Info data in Sibelius 7

Bob Zawalich November 29, 2011

Sibelius allows you to save data about a score in its Score Info fields. In Sibelius 7, you can view these fields when you are in the File tab:

File Home Note Input Notations Text Play Layout Appearance Parts Review View

Save Save As New Open Close Append

Info

Recent Print Export Teaching Help Plug-ins Preferences Exit

Show info for: Full Score

Some of the text below may be used in text in your score or parts. For example, Part Name is shown at the top of the of your parts.

Title: Split Instruments

Subtitle: But not all the way...

Composer: Bob Zawalich

Arranger: Bob Zawalich

Artist:

Part name: Full Score

Dedication: for Spike and Willoughby

Lyricist: Bob Zawalich

Copyist: Bob Zawalich

Publisher:

Instrument changes: PianoNormal\nFluteBassSplit\nBassoonNormal\nPianoSplit1\nPianoSplit2

Copyright: Copyright © 2011 Bob Zawalich

Opus number: 7

Composer's dates: 1950 -

Year of composition: 1954

Other information: For the best bones of all go to symphony hall

Yellow fields are replaced in File > New by the Score Information Setup fields.
Green fields are auto-generated.
Other fields can be set in Manuscript Papers.

Of these fields, Part Name and Instrument changes are generated automatically, and vary from part to part, but the other fields are typically entered by the user, either incorporated

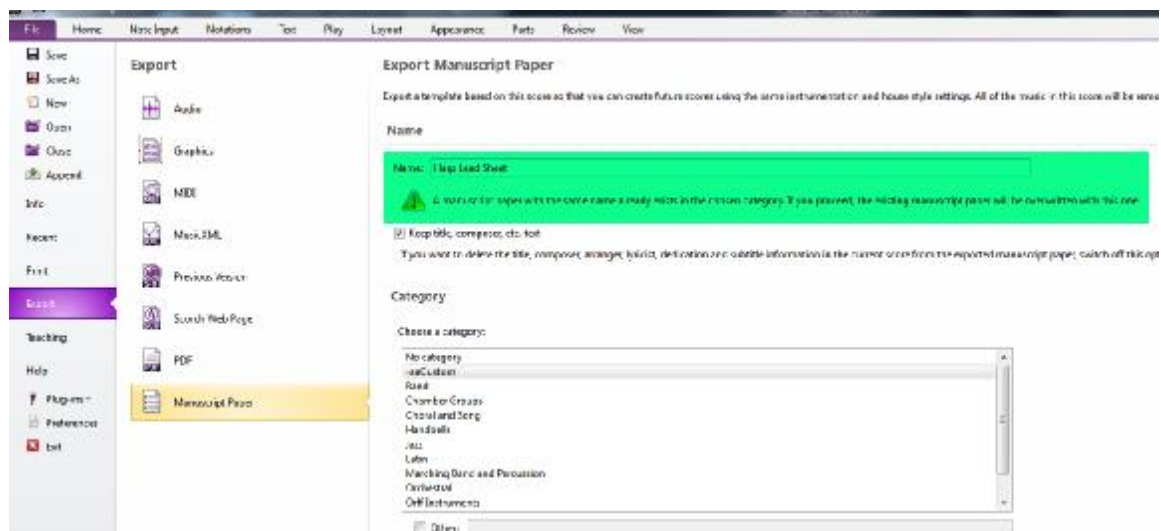
into a Manuscript Paper, added after a score has been created in File > New, or for some fields, entered as part of creating a new score.

A number of Score Info fields can be set up in advance by creating customized Manuscript Papers. These fields are:

Subtitle
Dedication
Arranger
Copyist
Artist
Publisher
Opus number
Composer's dates
Year of Composition

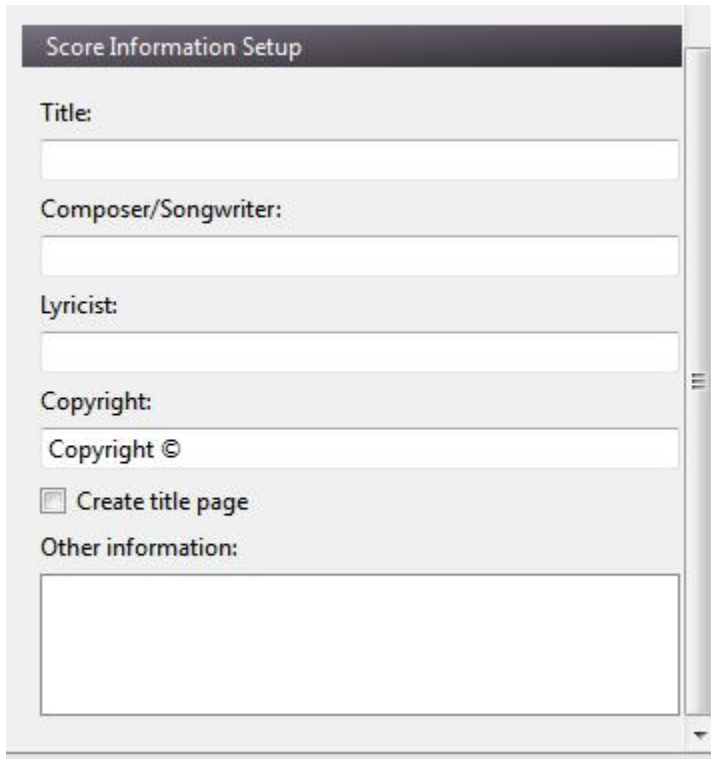
It is unlikely that you would want to preset the Subtitle, but the remaining fields can be set up in a Manuscript Paper score and will be present in any scores created from that Manuscript Paper.

To set up these fields in a Manuscript Paper, use File New to create a score using the Manuscript Paper you want to change. Add the fields you want to keep in the Score Info fields in the File tab, and then use File > Export > Manuscript Paper, giving the saved file the same name as the Manuscript Paper you started with, which will save the changes in the Manuscript Paper score. If the Manuscript Paper was originally a built-in paper, this will create a copy in the user Manuscript Paper folder, leaving the original unchanged.



If you know you are modifying a user-defined Manuscript Paper, you can instead open the Manuscript paper score from your user Manuscript Paper folder, make the changes to Score Info, and then save the score back to the user Manuscript Paper folder.

Some Score Info fields will always be replaced by the contents of the Score Information Setup fields in File > New, and, except for Copyright, these default to blank.



In Sibelius 6 and earlier versions, the Quick Start process used multiple dialogs, and if you chose Finish before you got to the dialog that set Score Info data, then any Score Info data stored in the Manuscript paper would be retained. In Sibelius 7, you do not have that option, and if you want to have the same Composer, Lyricist, Copyright, and Other Information fields (or less likely, Title) in all new scores, you need to take a different approach.

Besides the awkward approach of creating new scores in Sibelius 6 and then opening those scores in Sibelius 7, the only way to change these fields without using a plugin is to enter them yourself after creating the score, in the File tab.

One other approach is to use some downloadable plugins to store Score Info data into existing scores.

The first is *Transfer Score Info*, and it lets you extract Score Info settings from a score and save those settings (in the plugins Preferences database). You can run the plugin later and transfer those settings into the currently open score.

So, for example, you might want to have the same data in the Composer, Lyricist, Copyright and Other Information fields of all your scores. The first step is to open a score and add the data you want to transfer into those fields.

untitled - Sibelius 7

File Home Note Input Notations Text Play Layout Appearance

Save
Save As
New
Open
Close
Append

Info

Recent
Print
Export
Teaching
Help
Plug-ins
Preferences
Exit

Show info for: Full Score

Some of the text below may be used in text in your score or parts. For example, Part Name is shown at the top of the first and subsequent pages of your parts.

Title: Part name:
Full Score

Subtitle: Dedication:

Composer: Bob Zawalich Lyricist: Trevor Zawalich

Arranger: Copyist:

Artist: Publisher:

Instrument changes:

Soprano Cornet\n\nSolo Cornet\n\nRepiano Cornet\n\n2nd Cornet\n\n3rd Cornet\n\nFlugel\n\nSolo Horn\n\n1st Horn\n\n2nd Horn\n\n1st Baritone\n\n2nd Baritone\n\n1st Trombone\n\n2nd Trombone\n\nBass Trombone\n\nEuphonium\n\nEb Bass\n\nBb Bass\n\nTimpani\n\nDrum Kit\n\nPercussion 1\n\nPercussion 2\n\nXylophone

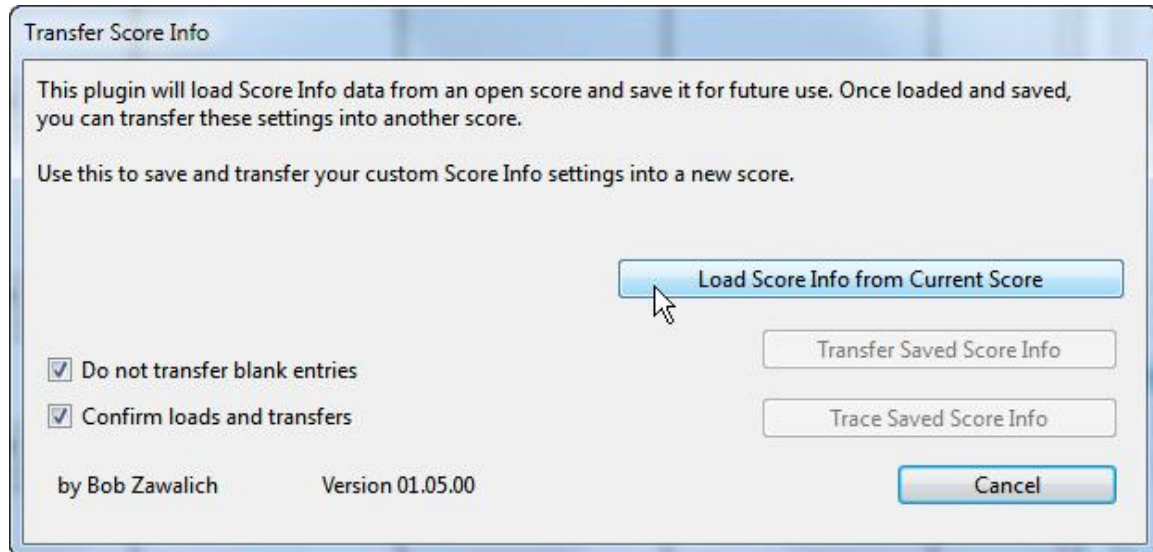
Copyright: Copyright © 2011 Bob Zawalich

Opus number: Composer's dates: Year of composition:

Other information:
For public performance, publication, recording, or broadcast, please contact Bob Zawalich at www.bobzawalich.com.

Now, with that score open, run *Transfer Score Info*, and choose Load Score Info from Current Score. Now you can open other scores, run the plugin and choose Transfer Saved Score Info, and this will copy the settings you made into the current score. Trace Saved Score Info will display all the settings that had been loaded. It is best to only create the settings you want to be transferred, and leave others blank before using Load Score Info.

If you have the default "Do not transfer blank entries" option set, then any blank entries will be ignored.



If you have many scores that you would like to transfer Score Info data into, use the downloadable *Fill Score Info* plugin. This will let you set up Score Info fields and then transfer them to a folder of scores.

The plugin dialog has edit boxes for all the Score Info fields. You can load the settings from the current score or type in the settings. You can also use text strings in the destination scores to provide some settings.

Fill Score Info

This plug-in will add Score Info entries to scores using text specified in this dialog or text from the score being processed. You can overwrite existing Score Info or only change empty entries.
 If the 'Use ... from score' checkboxes are checked, the plug-in will first look in the score being processed for text with the specified style. If found, that text will fill the corresponding Score Info entry. If score text is not used, any text typed in a text box will fill the corresponding Score Info entry. If a text box is empty, no changes will be made to that Score Info entry.
 To set a Score Info entry blank, type the special text /Blank/ in the text box.

☒ Overwrite existing Score Info entries

Title: ☒ Use Title from score

Subtitle: ☒ Use Subtitle from score

Dedication: ☒ Use Dedication from score

Composer: ☒ Use Composer from score

Lyricist: ☒ Use Lyricist from score

Arranger:

Copyist:

Artist:

Publisher:

Copyright: ☒ Use Copyright from score

Opus number:

Composer's dates:

Year of composition:

Other Information:

|----These buttons change only the text boxes and checkboxes above, not Score Info entries----|

☒ Save and close scores ☒ List names of changed scores in trace window

☐ Save but do not close scores

☐ Neither save nor close scores

By default, blank fields are not transferred, so leave anything you do not want to copy blank, and the settings you specify will be copied into the destination scores.